



5.1.4 Topbar and Statusbar - Window menu

Table of content

Window Menu.....	1
Show Status Bar.....	1
New Window.....	1
New Main Window.....	1
Toggle Window Full screen.....	1
Next Workspace.....	1
Previous Workspace.....	1
Save Screenshot.....	1
Save Screenshot (Area).....	2
Toggle System Console.....	2

Window Menu

Window related functionality.

Show Status Bar

Display the footer.

New Window

Creates a new instance of Bforartists. But without Top Bar.

New Main Window

Creates a new instance of Bforartists with its own workspace and scene settings and with the Top Bar.

Toggle Window Full screen

Makes Bforartists full screen.

Next Workspace

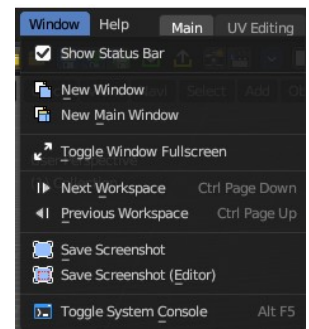
Cycle to next workspace.

Previous Workspace

Cycle to previous workspace.

Save Screenshot

Saves a screenshot from the whole application.



Save Screenshot (Area)

Saves a screenshot from the area under the mouse.

Toggle System Console

Toggles the System console. This is a Windows feature. Under Linux and Mac you can use the bash.